



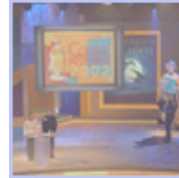
Project. Present. Perform.



**Roadie S12**  
**SXGA 12,000 Lumen DLP**  
**Projector**  
 38-DMD017-01

**Solutions For**

- Large audience events
- Medium and large auditoriums
- Conferences and business presentations
- Concerts and other large entertainment venues
- Outdoor advertising



**Product Info**

Introduction  
 Specifications  
 Images  
 Brochures  
 User Manuals

**Resources**

Service & Support  
 Try It / Buy It  
 Where To Rent It  
 White Papers

**Leading the Way in Christie's Digital Vision**

Christie's Roadie, the world's first purpose-built multi-media projector for large audiences projects with true SXGA 1280 x 1024 resolution and it can do so at 12000 ANSI lumens, making the S12 the most powerful purpose-built projector in its class, available on the market today.

The Roadie S12 utilizes the advanced image processing technology developed for the Roadster series, to offer a level of image quality that is unrivaled by today's projection systems. Better still by taking advantage of the S12's true digital capabilities you can project HDTV and DTV images as they were intended

In designing the S12 we have taken full advantage of our relationship with our parent company Ushio, a leading manufacturer in lamp technology and design. The S12 combines such stunning image rendition, brightness and sharpness of details, yet the S12 utilizes the same 1.9 kW Ushio Xenon short-arc illumination system as used by our X10 projector.

In keeping with the Roadie series edict of offering purpose-built projectors for large audience applications, the S12 utilizes Christie's unique Intelligent Lens System (ILS™). The ILS™ allows lens position to be automatically recalled during channel switching for up to 100 sources. Other features include built-in stackability and a full suite of fixed and zoom lenses.

**Features**

- 12,000 ANSI lumens at 1.9kW operation
- Christie's revolutionary DLP light engine
- True SXGA, 1280 x 1024 resolution
- 1.9kW Ushio Xenon short-arc illumination system
- >90% brightness uniformity
- ILS™ Intelligent Lens System
- Built-in light shutter
- Greater lens offset capability and new tilt adjustment for focus uniformity
- Dynamic scaling, horizontal and vertical adjustment for video and data
- Fully motorized zoom, focus, horizontal and vertical offset (with manual override)
- Rugged, self-stacking chassis design
- 100% digital solution from source to screen

**USER HIGHLIGHTS**

- 3 chip 1.1" DMD™ system offering over 1 billion displayable colors
- Greater than 10000 ANSI lumens with true SXGA image resolution
- Suite of custom accessories including custom short throw, fixed and zoom lenses, stacker kit, remote LCD controller
- Dynamic scaling – horizontal and vertical adjustment for video and data
- ILS™ allows lens position to be automatically recalled during channel switching for up to 100 sources

[Home](#) | [Site Map](#) | [GSA](#) | [Contact Webmaster](#)

Best viewed with Internet Explorer 5.5 or higher @ 800x600

© 2003 Christie Digital Systems, Inc. All rights reserved.

Information presented on this web site is continually updated and is subject to change without notice. Please speak to your Christie representative for the confirmation of installation-critical specifications and features.